

June  
2020

# TEAL2.0 NEWSLETTER



Co-funded by the  
Erasmus+ Programme  
of the European Union



## IN THIS ISSUE

### PG. 2

Learn about the TEAL2.0 project and the collaborative teaching & learning platform that we are developing

### PG. 3

Learn why to join TEAL2.0

### PG. 4

Learn who the project partners are, how you could have your say and how to contact us

**Improving Access to Science and Technology Higher Education in Resource-Poor Institutions through an Open Platform for Technology Enabled Active Learning Environment**

610186-EPP-1-2019-LK-EPPKA2-CBHE-JP



## THE TEAL2.O PLATFORM

TEAL2.O will be a cloud-based, open-access collaborative teaching & learning platform. The TEAL2.O platform will offer:

- Access to MOOCs and other digital learning content developed around the globe
- Modularity and full customizability, allowing institutions and faculty to design programs and develop teaching content that suit local needs and constraints, including those of underrepresented learners
- Autonomous assessment and quality assurance
- Integration of open source hardware and software into the learning process to maximize learners' exposure to technology and provide access to virtual labs and experimentation
- Enhanced opportunities for collaborative learning and teaching, allowing institutions to pool available expertise and support quality
- Learner-centred education, flexible learning pathways and co-creation on the part of learners



Co-funded by the  
Erasmus+ Programme  
of the European Union

*This project has been funded with support from the European Commission. This publication reflects the views only of the author, and the Commission cannot be held responsible for any use which may be made of the information contained therein.*

## THE TEAL2.O PROJECT

The TEAL2.O project is implemented by a consortium of 11 universities from Sri Lanka, India, Thailand, Italy, Norway and Romania, joined by a private company from Bulgaria.

Improving access to Science and Technology higher education is top priority in the participating Asian countries. Increasing Gross Enrollment Ratios and reaching underrepresented and disadvantaged groups requires investing serious effort into Open and Distance Learning (ODL). Yet, ODL and increased access, especially in resource-poor institutions, pose many quality-related challenges resulting from shortages of expertise, technological equipment, collaboration and internationalization. We aim to contribute to addressing these challenges and facilitate access to higher education through a comprehensive technological solution.

The TEAL2.O project will develop and deploy an open-access platform for technology-enabled learning environment that will enable the design and delivery of quality ODL in Science & Technology higher education.

We expect our work to have the following impact:

- Improved access to university courseware and open learning opportunities in the participating Asian countries
- Improved access to learning support technologies and virtual laboratories for learners in resource-poor institutions
- Enhanced collaboration among universities in Asia and Europe
- More opportunities for learner co-creation in learning & teaching, both in traditional classrooms and online
- More opportunities for collaborative learning and teaching in the Science & Technology field
- Improved quality of Science & Technology higher education

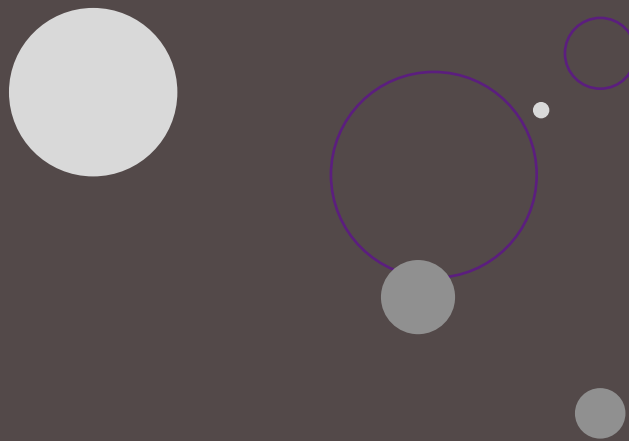


### WHY USE THE TEAL2.O?

The proposed TEAL2.O environment will have features similar to Learning Managements Systems such as Moodle or Canvas, and to online course platforms such as edX or Coursera. However, it will extend its capabilities beyond the functionality available in these systems. One of the drawbacks of those systems is the lack of modularity which prevents customizability to local settings in terms of programs, content development and delivery.

In contrast, TEAL2.O will be devoted to customizability and collaborative development at all stages – at the stage of developing programs, at the stage of developing courses and content, and during the learning process. This will make learning more relevant to institutional requirements and individual learners' needs and capabilities. It will enable effective feedback collection and assessment of learning efficiency. All of these features will be wrapped in an inbuilt evaluation and quality assurance process that will rank programmes, courses, content, teachers, and students based on peer reviews and interaction with the content.

The project will train staff, faculty and students to use and develop the platform, and will establish 8 university Centres to provide user support and promote the exploitation of TEAL2.O, in the long run helping it to grow into a self-sustainable learning network. The TEAL2.O platform will be open for use by any institution of higher learning.



**Get access** to a technology-enabled teaching & learning environment suitable for online and distance education in the Science & Technology field and providing access to Virtual Laboratories and a global network of experts.

**Benefit** from functionalities that enable your university to build its own programs, your faculty members to build their own modules of content, and your students to build their own courses by mixing existing content and adding new content.

**Contact** the TEAL2.O creators to let us know you would be interested to join the TEAL2.O network.



## TEAL2.O PARTNERS AND CREATORS

### Contact us

teal2.o@eng.pdn.ac.lk

*The TEAL2.O platform is being created by:*

University of Peradeniya, Sri Lanka

Asian Institute of Technology, Thailand

Sri Lanka Technological Campus SLTC

Indian Institute of Information Technology, Allahabad, India

Vellore Institute of Technology, India

RK University, India

University of Bologna, Italy

University of Stavanger, Norway

University of Moratuwa, Sri Lanka

Naresuan University, Thailand

European Center for Quality, Bulgaria

Transilvania University of Brasov, Romania

*We are supported by:*

Open University of Sri Lanka

Lanka Education and Research Network (LEARN), Sri Lanka

University of Sri Jayewardenepura, Sri Lanka

Eastern University, Sri Lanka

Jaffna University, Sri Lanka

University of Ruhuna, Sri Lanka

### Have your say

We would like to hear about your expectations for TEAL2.O!

Click on the relevant link below to answer a short questionnaire.

Thank you!

Faculty members

University administration

Students

Open and distance learners

Other education institutions

Public administration



Co-funded by the  
Erasmus+ Programme  
of the European Union



ALMA MATER STUDIORUM  
UNIVERSITA DI BOLOGNA

